

INYUDA®

M14U-OPS

用户使用手册 User Manual



产品型号 Model No.: M14U-OPS

PCB 版本 PCB_VERSION: V2.0

声明： Statement:

本手册包含的内容并不代表本公司承诺，本公司保留对此手册更改的权力，且不另行通知，对于任何因安装、使用不当而导致的间接、直接、有意或无意的损坏及隐患概不负责。

The contents contained in this manual do not represent a commitment on the part of the Company. The Company reserves the right to make changes to this manual without notice, and shall not be liable for any indirect, direct, intentional or unintentional damages and hazards resulting from improper installation or use.

警告提示 Warning

为避免电击危险： To avoid the risk of electric shock:

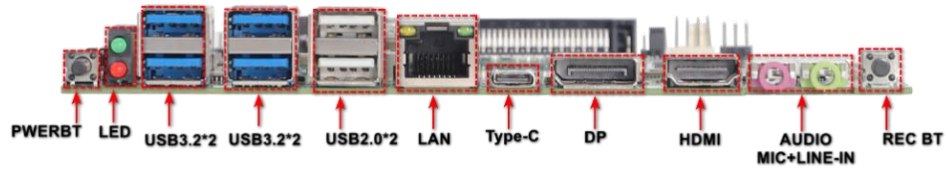
- 请勿在雷暴天气期间连接或断开任何电缆的连接，安装，维护或重新配置本产品。 Do not connect or disconnect any cables, install, maintain or reconfigure this product during a thunderstorm.
- 将所有电源线连接正确且采用接地的电源插座。 Connect all power cords properly and use a grounded electrical outlet.
- 将所有要连接到本产品的设备连接到正确连线的插座。 Connect all devices to be connected to this product to properly wired outlets.
- 尽量仅用单手连接或断开信号电缆的连接。 Try to connect or disconnect signal cables with one hand only.

更换系统电池时，请使用同类电池进行更换。电池含锂，如果使用、操作或处理不当会发生爆炸。 When replacing the system battery, use a comparable battery for replacement. Batteries contain lithium and can explode if used, handled, or disposed of incorrectly.

I. 详细规格 Details Specifications:

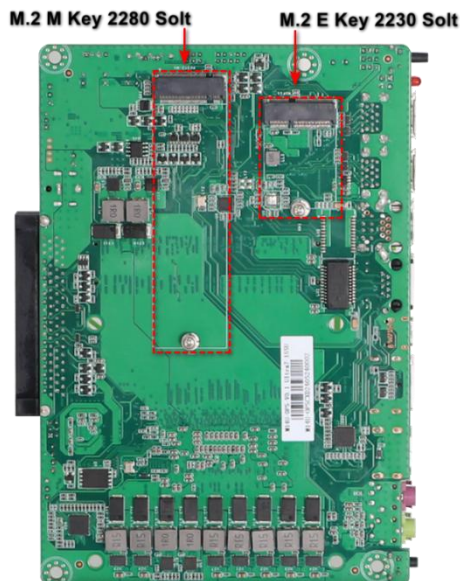
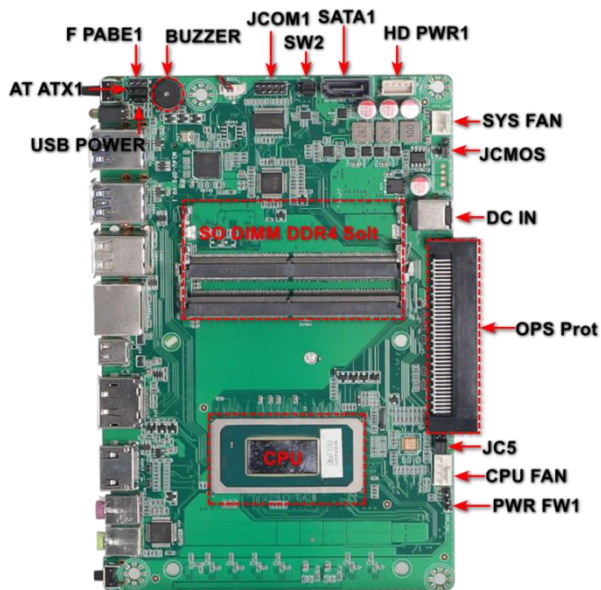
主板型号 MB Model.:	<ul style="list-style-type: none"> ● M14U-OPS V2.0
处理器 Processor	<ul style="list-style-type: none"> ● 支持 Support Intel®14th Core Ultra 5/Ultra7/Ultra9 移动处理器 Mobile processor
显示芯片 Graphics	<ul style="list-style-type: none"> ● Intel® Arc™ Graphics 核显 Integrated Graphics
显示输出 Display Output	<ul style="list-style-type: none"> ● IO Port: HDMI+DP+Type-C_DP ● OPS Port: HDMI+DP ● 最大分辨率支持 HDMI Max support 4096x2304@60Hz ● 最大分辨率支持 DP Max Support 7680x4320@60Hz
内存 RAM	<ul style="list-style-type: none"> ● 2 *SO-DIMM 支持 Support DDR5 4800/5600/6000/6400/6800/7200MHz MAX: 96G
存储 Storage	<ul style="list-style-type: none"> ● 1*2.5 寸 inch SATA Support 固态硬盘 SSD/机械硬盘 HDD ● 1*M.2 M Key 2280 solt 支持 Support NVMe/ SATA 协议 Protocol (Auto Switch)
扩展槽 Extension	<ul style="list-style-type: none"> ● 1*M.2 E Key 2230 solt
音频 Audio	<ul style="list-style-type: none"> ● 1*Realtek ACL897 High Definition Audio Driver
网络 Internet	<ul style="list-style-type: none"> ● 1*Realtek RLT8111H 千兆网卡[可选双网] Gigabit LAN card [optional dual LAN]
USB	<ul style="list-style-type: none"> ● 2*USB2.0 ● 4*USB3.2
I/O 芯片 Chip-set	<ul style="list-style-type: none"> ● ITE8613E
BIOS	<ul style="list-style-type: none"> ● AMI BIOS
供电 Power Input	<ul style="list-style-type: none"> ● DC_JACK 12V/19V
散热系统 Fan	<ul style="list-style-type: none"> ● 自带 With CPU FAN [内置 Built-in: 1*SYS_FAN1x3Pin 1*CPU_FAN 1x4Pin]
环境 Environment	<ul style="list-style-type: none"> ● 工作温度 Working Temperature: 0~60°C ● 存储温度 Storage Temperature: -20°C~75°C ● 湿度 Humidity: 0%~95% 相对湿度, 无冷凝 0%~95% Relative humidity, non-condensing

II. 后置 IO 面板: Rear Panel I/O Ports:



后置 I/O 面板 Rear Panel I/O Ports:	<ul style="list-style-type: none"> ● PWERBT 开关机按钮 Power button
	<ul style="list-style-type: none"> ● 电源 Power_LED+HDD_LED: 电源 Power_LED 绿色常亮 Green light on HDD_LED 红色闪烁 Red light blink
	<ul style="list-style-type: none"> ● USB3.2*2: [Gen2 MAX: 10Gbps]
	<ul style="list-style-type: none"> ● USB2.0*2 (RJ45 optional)
	<ul style="list-style-type: none"> ● RJ45/LAN [以太网接口 Ethernet interface] With10/100/1000MbpsLANRealtek 千兆网口 Gigabit Ethernet port
	<ul style="list-style-type: none"> ● Type-C [DP+USB3.2]
	<ul style="list-style-type: none"> ● DP 支持 Support 4096x2304@60Hz
	<ul style="list-style-type: none"> ● HDMI 支持 Support 7680x4320@60Hz
	<ul style="list-style-type: none"> ● AUDIO [粉色 Pink MIC 绿色 Green Line-IN]
	<ul style="list-style-type: none"> ● REC_BT [一键还原 配合软件使用 One-Click Restore Used in conjunction with software]

III. 内置接口: Inner Interfaces:



JUSB_POWER	● 1x3Pin Header [JMP 默认 default 1-2=VCC5 切换 switch 2-3=5VSB]
F_PANEL	● 1x3Pin Header [短接 short-circuit 1-2=触发开机 Power SW 短接 short-circuit2-3=重启复位 reboot reset]
BUZZER	● 蜂鸣器 buzzer
SYS_FAN	● 1x3Pin Wafer SYS_FAN Connector
AT_ATX1	● 1x3Pin Header [JMP 默认 default 1-2=关闭通电自启 Turn off Auto power-on 切换 switch 2-3=开启通电自启 Turn on Auto power-on]
JCMOS	● 1x3Pin Header [JMP 默认 default 1-2 切换 switch 2-3=CLR_CMOS]
JCOM1	● 2x5:9Pin Header RS232
SW2	● 2X3:6Pin Header [默认 default 1-3、2-4=JCOM1 切换 switch 3-5、4-6=OPS Port (RX TX)]
HDD_PWR1	● 1x4Pin Wafer [外部 SATA 硬盘供电 External SATA hard disk power supply]
SATA1	● SATA3.0
DC_IN	● DC 供电 Power Supply: 12V/19V
CPU_FAN	● 1x4Pin Wafer CPU_FAN Connector
OPS Port	● JATEX25-80Pin 开放式可拔插 Open Pluggable
M.2 M Key	● M.2 M Key 2280 Solt [默认 default SATA 协议 protocol,

	NVMe/SATA 协议 protocol (自动切换 Auto switch)]
M.2 E Key	● M.2 E Key 2230 Slot 支持 support WiFi+蓝牙模块 Bluetooth module
SO-DIMM	● 2 *SO-DIMM 支持 support DDR5 4800/5600/6000/6400/6800/7200MHz MAX: 96G
PWR FW1	● 开关插针 Power PIN

OPS Port JATEX25-80Pin 集成功能 integrated function:

DP	● 1*DP Display Port
HDMI	● 1*HDMI Display Port
USB3.2	● 4*USB3.2 Gen2
USB2.0	● 2*USB2.0
SYS_FAN_TACH	● 系统风扇控制 System Fan Control
UART	● UART3.3V 输出 output TX RX
PS_ON#	● 可拔插信号开启输入 Pluggable signal on input
STATUS	● 电源正常 输出 (oc) 检测 Power supply normal Output (oc) detection

OPS Port JATEX25-80Pin

80 PIN OPS 端子, 内部包含 HDMI 信号, 音频信号, 串口信号, 开关机信号, 状态检测信号等。具体定义如下:

80Pin OPS terminal, which contains HDMI signal, audio signal, serial port signal, switching signal, status detection signal and so on internally. Specific definitions are as follows:

PIN	定义	PIN	定义	PIN	定义	PIN	定义
1	DP_3N	21	HDMI_TX0_DP	41		61	USB_DP1
2	DP_3P	22	GND	42		62	GND
3	GND	23	HDMI_TX1_DN	43		63	USB_DN2
4	DP_2N	24	HDMI_TX1_DP	44		64	USB_DP2
5	DP_2P	25	GND	45		65	GND
6	GND	26	HDMI_TX2_DN	46		66	USB_DN3
7	DP_1N	27	HDMI_TX2_DP	47		67	USB_DP3
8	DP_1P	28	GND	48		68	GND
9	GND	29	HDMI_SDA	49		69	AUDIO_L
10	DP_ON	30	HDMI_SCL	50	SYS_FAN	70	AUDIO_R
11	DP_OP	31	HDMI_HPD	51	UART_RX	71	CEC
12	GND	32	GND	52	UART_TX	72	PB_DET
13	DP_AUXN	33	VDD	53	GND	73	PS_ON
14	DP_AUXP	34	VDD	54	USB3_RXN	74	STATUS
15	DP_HPD	35	VDD	55	USB3_RXP	75	GND
16	GND	36	VDD	56	GND	76	GND
17	HDMI_CLK_DN	37	VDD	57	USB3_TXN	77	GND
18	HDMI_CLK_DP	38	VDD	58	USB3_TXP	78	GND
19	GND	39	VDD	59	GND	79	GND
20	HDMI_TX0_DN	40	VDD	60	USB_DN1	80	GND